

PILBARA 8 DAY ADVENTURE



PILBARA 8 DAY Adventure

8 DAY ADVENTURE/ 7 NIGHTS | \$1675/ VEHICLE

The ancient landscape of the Pilbara is full of surprises; and many who venture here are left with lifelong impressions of the place. In fact so many people say the Pilbara would have to be their favourite place in the country. Expansive plateaus, contrasting to towering mountain ranges that bear rich earthy tones and hidden waterholes tucked away in the bush begging for you to find. Throw in some stunning gorges, river systems & the fact you're in some of the most naturally remote areas in Australia let alone the world it is soon apparent you are in an adventurer's paradise! Best of all, the good stuff is only accessible by a well prepared 4WD!



From our lead guide.

"After travelling every land region in Western Australia, I always look forward the most to coming back to the East Pilbara - relatively isolated, no crowds and some of the most diverse off the map touring in WA. This is my favourite place to be in WA" - Jed Currey



Tour Review

"That is one of the best trips I have ever done in a 4wd. So much to see, experience and explore along the way. Jed was a great guide, full of laughs and energy. You can see he likes this place & we loved how relaxed the whole thing felt"

- Peter Mack via FACEBOOK



WHAT CAN I EXPECT?

Come along with Explore WA on this 8 Day 4wd touring adventure departing Newman, bringing you the hidden highlights & untouched areas of the East Pilbara that will simply blow you away.



We retain a flexible trip route where you will enjoy hidden waterholes, ancient rivers, rock art, mining history, meteorite craters & some of the best camping this side of the moon with a focus on water throughout the journey. We always like to be based nearby water for overnight camping & as such will never pass up the opportunity to stop for a swim!

Throughout our trip you will enjoy some of the more hidden highlights off the tourist route; this is why we rate the Pilbara trip as our in house favourite adventure! Big call - But you will soon see why it delivers one of the most amazing offroad 4wd adventure experiences off the beaten track.



Traversing the Pilbara landscape you will tackle a range of terrains against the ever changing Pilbara landscape. Our tour route has been developed to access some of these more isolated, relatively untouched areas that are only available to 4wder's. Our local experience & knowledge ensures our guests experience the 'best of' in the Pilbara region with a relaxed & flexible approach.



The flexible nature of the trip means we will optimise our travels to suit not only the group, but local weather & recent climatic events.

We have a turn of the century gold mine tour included as part of our trip, with lots of old machinery relics and impressive rock & stone collections available to view. We will also lead you to a Secret WW2 air force base used in the Second World War where you can view the ruins & have a look around, stopping for a photo on the runway. There is so much to share for the intrepid traveller who takes the plunge to experience a vast and expansive area of country not widely known for its adventure touring gems.

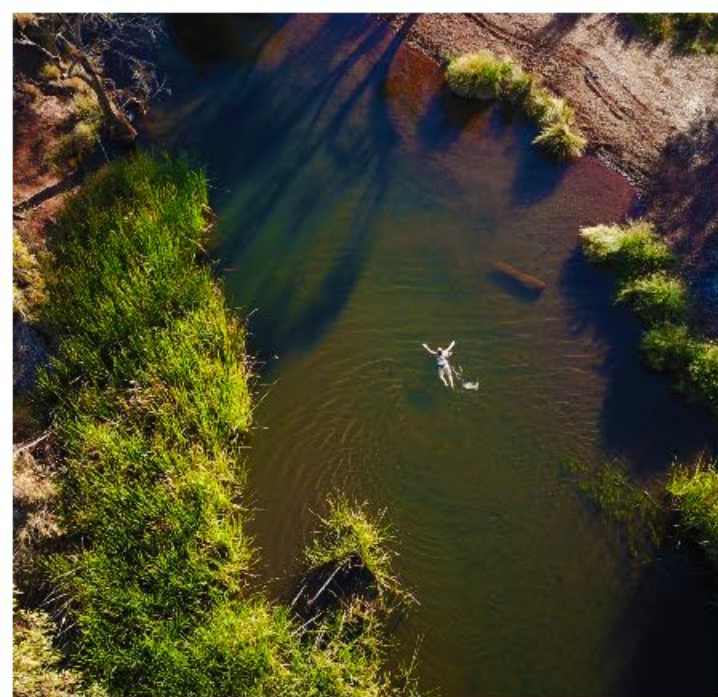


This trip is an in house favourite & will blow you away with its diversity, history & authentic outback touring! With a small group setting & expert knowledge from your tour leader, we're sure you will come away from the trip totally in love with what is on offer here .

Come and see what everyone else is missing out on; we're sure you will have a new favourite destination to travel by 4x4 in Western Australia.

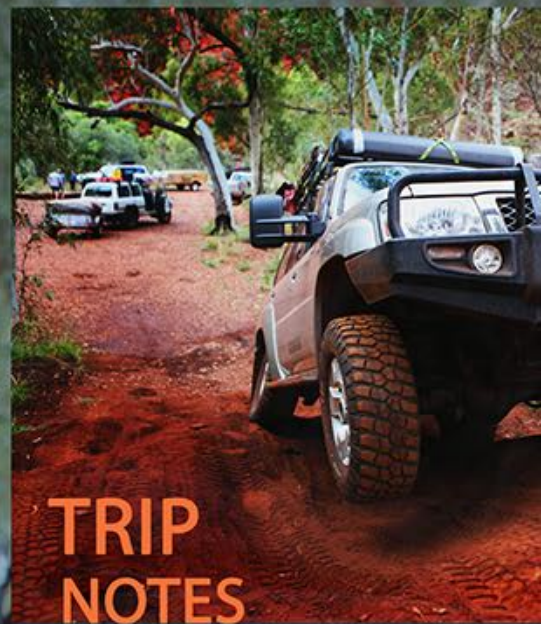
Please note this trip starts & returns via Newman, WA. See some of the images from this amazing adventure in this info sheet & visit our youtube channel for a trip teaser.





YOUR REQUIREMENTS

- Vehicles should be in sound mechanical condition as recoveries can be expensive.
- Ensure your spare tyre(s) are in good condition.
- You need to carry all camping equipment, food, beverages and water. You can hire equipment from us if you do not have your own.
- Warm clothing and adequate bedding should be bought along.
- No dogs are permitted.
- Air compressor & tyre deflators
- Two way radio mandatory to communicate with convoy.
- Please bring along your favourite bush toilet or come prepared for no facilities.
- Fuel range of 600KM offroad required for our longest stretch without fuel.
- 30L of drinking water on board, collection for other water needs available from natural sources.
- Snorkel highly recommended as we do cross water courses & the Pilbara is dusty.
- No Highway tyres, Minimum All Terrain
- Spare Air Filter or Filter Socks highly recommended.
- We recommend you have your vehicle inspected / serviced prior to this tour.



TRIP NOTES

Some of our adventures traverse extremely remote country & its imperative your vehicle is in good mechanical condition. Pre trip checks are highly recommended & in some cases mandatory for our adventures depending where we are travelling. If you have any query relating to your set up or vehicle fit out & condition please contact us for friendly help & advice.









THE EXPLORE WA 4WD ADVENTURE EXPERIENCE

Explore WA offers small group Tag-a-long adventure tours run in a fun, engaging environment that showcase the 'best of' in the regions we travel. With a clear focus on your experience & retaining a relaxed atmosphere we showcase great 4wding locations, campspots and openly share our knowledge & experience with guests on tours across every region in Western Australia. We are a licensed, insured & accredited tourism business, trust the tick!

OUR STANDARD INCLUSIONS ARE LISTED BELOW



- Services & experience of your Explore WA guide with local track & camp knowledge as well as local area history & commentary delivered throughout the adventure.
- Enjoy our signature tour atmosphere that is welcoming, inclusive, engaging and full of laughs for which we have become known and regarded for.
- No minute by minute "tour bus" schedules - We want you to enjoy your holiday!
- Hot Showers at camp available on request (BYO WATER)
- Explore WA are here to answer all your questions and provide advice throughout your journey. We can provide assistance with camp arrangements, recoveries or even coaching for you behind the wheel! We help as much as you need in camp or out and about during the day.
- Explore WA carries emergency communication equipment and comprehensive first aid supplies. We have Sattelite Comms and Emergency Beacons on board.
- Explore WA are able to assist with vehicle recoveries if you become bogged and provide advice and assistance for effective means of recovery. We carry a comprehensive range of recovery equipment on all our adventures.
- We welcome you to cook with us over open fire & we provide a hotplate for your use. We also love to show people how to cook camp oven delights like damper!.
- All national parks passes, camping fees, permits & licenses are included in your adventure trip price.
- Photos are taken of the adventure, and shared openly for your own use after the trips have been completed so you can relive the journey. We are able to help with photography tips & tricks & will put you in front of some amazing settings to get that perfect shot.
- Nibbles are provided throughout our journey at camp in the evenings.*
- Travel our pre planned routes that provide the perfect balance of off road adventure, camping and sight-seeing.
- We know the area, the spots and what you need to see & have the skills and experience to ensure you have an amazing time out bush on our adventures!

*select adventures **

Check out our reviews

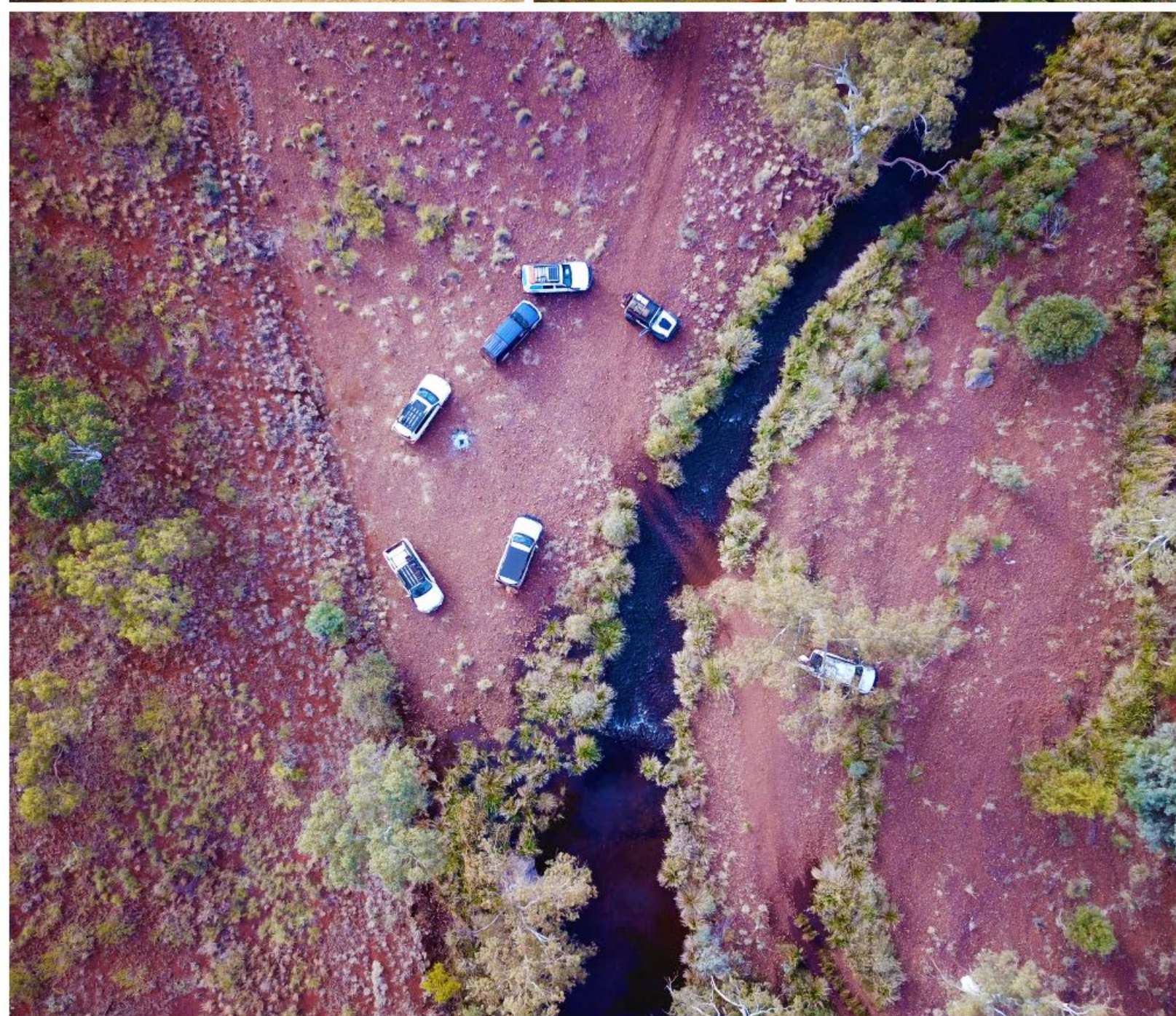
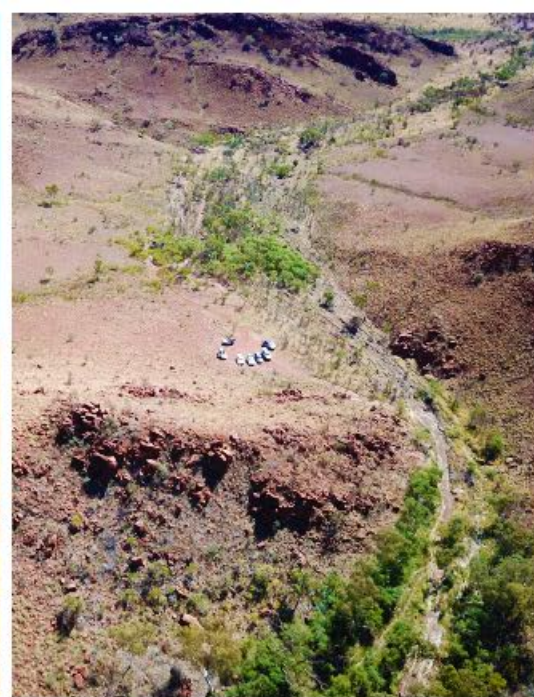


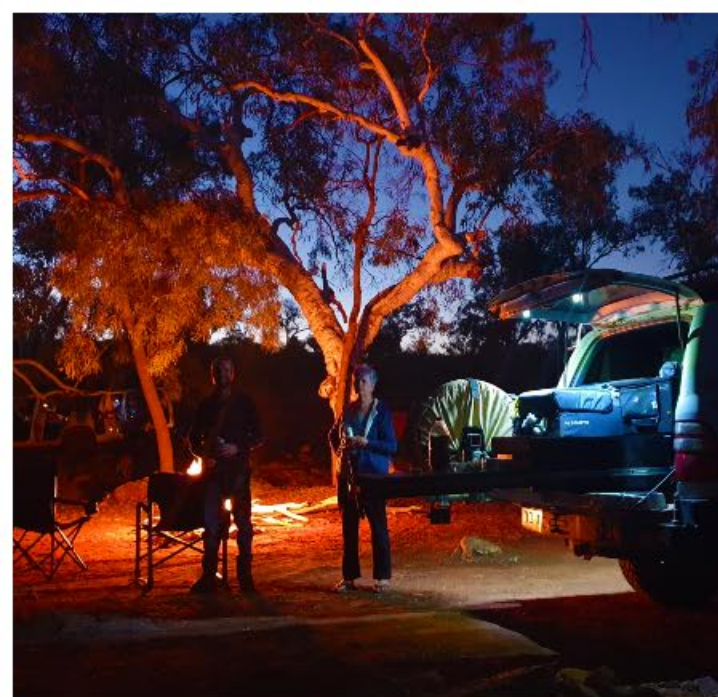














WANT TO BOOK? ITS EASY!

Please get in touch to let us know you would like to book on the adventure & if you have any questions, we will be more than happy to answer for you at this stage. We can forward you a trip invoice or you can book online via the website. We suggest everyone gives us a call prior to booking to discuss vehicle set up.

admin@explore-wa.net or
0406108480

Visit us online
www.explore-wa.net
[@explorewa4wd](https://www.instagram.com/explorewa4wd)

