



DIRK HARTOG ISLAND

8 Day Adventure



DIRK HARTOG ISLAND

2026 Edition

Dirk Hartog Island is one of Australia's most unique off-road adventures. Your journey begins with a single-vehicle barge ride across the turquoise waters of South Passage before setting out to explore the island's most iconic sights, guided by expert insight and local knowledge.

This world-class destination is steeped in history, renowned for its fishing, rich ecological values, and breathtaking coastline. Its isolated nature offers the rare opportunity to discover remarkable places without the crowds, and by joining us, you'll gain exclusive access to the island's hidden gems and stories.

Across the adventure, we'll camp at both the homestead and the northern tip of the island, balancing time for relaxation with opportunities to dive into your favourite seaside activities. You'll enjoy two unforgettable sundowner events—one at the famous Inscription Bar where we'll toast to the day's adventures, and another at a stunning vantage point to witness Dirk Hartog's legendary sunsets. A highlight of the stay includes a delicious meal at the Dirk Hartog Island Lodge, adding a touch of comfort to the rugged adventure.

Camper-trailer and tinny friendly, this small-group journey has something for everyone in every season. Come and discover the natural beauty, fascinating history, and unmatched sense of isolation that make Dirk Hartog Island a truly unforgettable adventure.

8 DAY ADVENTURE / 7 NIGHTS

RRP \$ 1999 / Vehicle / 1 Adult
inc BARGE TRANSFER

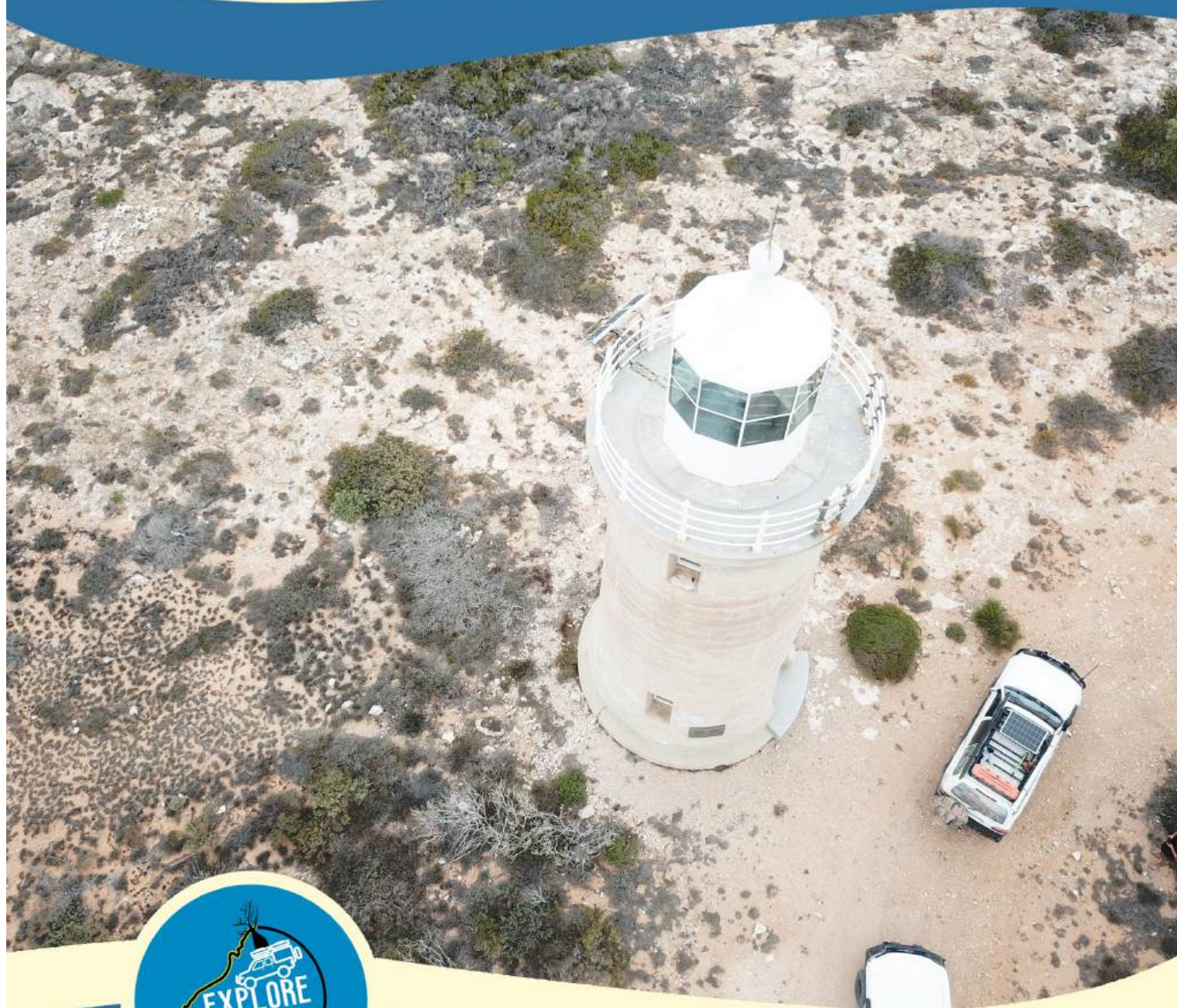
2026 RATES

- + Additional Adult \$275
- + Child >6 \$195
- + Child <6 \$105
- + Trailer Return Transfer \$175



"1616 Marked the first European landing to Australian shores & today you to can experience this amazing island escape full of history, beautiful scenery, world class fishing & isolation in your 4wd. You wont forget this one in a hurry"

- Jed Currey
Lead Guide



Based at the homestead, enjoy flushing toilets, hot showers, BBQ & plenty of space to set up! Fish right out the front, soak up the sun or grab Oysters off the rocks.

Dampiers Landing is one of our favourite camps at the North of the island. A gateway to Turtle Bay, Cape Inscription & the breathtaking West Coast Cliffs.

Buddy's Camp Dirt Hartog Is.
Camp Review



WHAT CAN I EXPECT

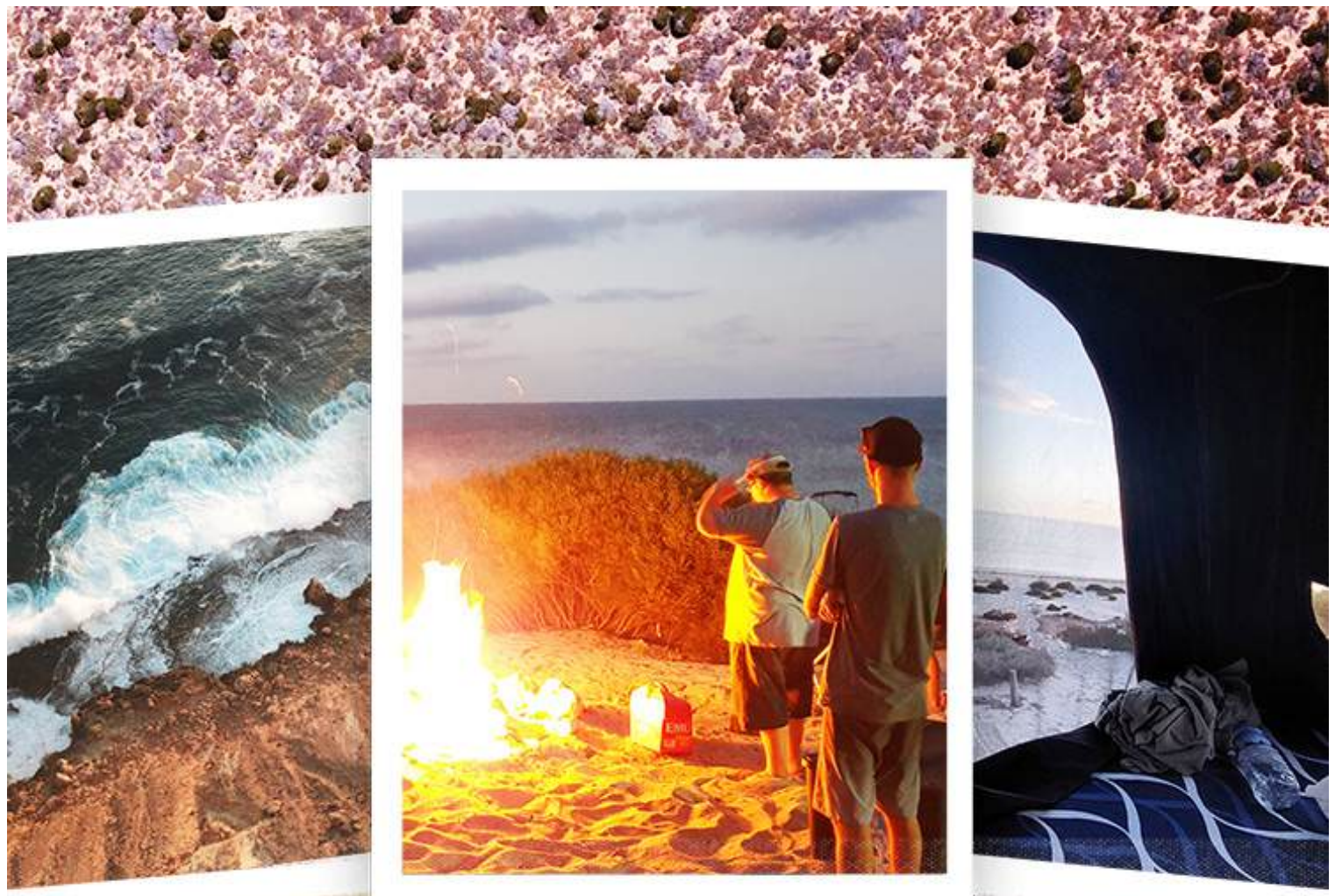
Travelling to the Western most point of mainland Australia, you will find yourself at Steep Point, in the Shark Bay world Heritage Area. Here, our adventure begins on the shores of Shelter Bay where we will be boarding the Barge "Hartog Explorer" delivering you & your vehicle, across to Dirk Hartog Island.

As you drive off the barge & hit the shores of this Eco Tourism destination, the stage is set for days of adventure as we criss cross the island uncovering its amazing history while enjoying seaside activities.

Our tagalongs to the island have been developed to showcase everything that makes Dirk Hartog Island one of the most amazing adventure touring destinations in Australia! Balancing days of 4wd touring, amazing scenery, history discovery & the coastal activities like fishing snorkeling & foraging this trip allows you to experience the region for all its great attributes.

Throughout our travels there is always something to see & our expert lead guide offers you a chance to see the hidden gems, understand the history & be in the right place at the right time to maximise your time here. Our trip includes a night prior to our barge departure at Shelter Bay nearby Steep Point so you can enjoy an additional night on the mainland.

Each adventure on the island is curated to the weather & the travelling group drawing on Jed's expertise on the island.



WHAT CAN I EXPECT

Our adventure camps will be between Buddy's camp at the DHI homestead & Dampiers Landing at the Northern end of the island.

Buddy's Camp has facilities like flushing loo's, showers, BBQ & a new Safari Tent shelter and plenty of space to set up camp. Here we can also enjoy an evening fire in season.

Dampiers Landing is the perfect base to explore the top of the island. It offers the most protection & room for a group & sits near the Western Cliff's of the island, regarded as one of the premiere land based fishing locations in Australia. The beach over the foredune is great for swimming & mullocky fishing at night.

Each day will include day trips to various places on the island & it will all be flexible in the sense of what works best with weather conditions on the day. There will be ample time to fish, relax, explore, roam, snorkel & enjoy the island any which way you desire throughout the trip. There is absolutely no minute by minute timetables on this trip- or any of our adventures for that matter. This allows us to tailor every trip perfectly to suit the group & weather. The island is sprawling with hidden nooks and crannies, come and explore the wild west coast, feel the rush up close of the island blowholes, spot whales mere metres from the cliff edge on their migratory journey and sit back in awe at some of the coastal vistas we'll put in front of you!

You can expect a mix of terrain on the island including, limestone, sandy tracks, sand dunes & salt flats as we move about the island's farthest reaches.



WHAT CAN I EXPECT -continued

You are welcome to bring along a trailer boat, or camper; maximum overall length of tow vehicle & trailer is 10.6M. There is an additional \$165 barge transfer fee & you will need to let us know at time of booking if you wish to do so including the registration of the trailer.

For the keen fisherman, you will appreciate the endless opportunities on offer for all weather conditions & times of year on DHI. Fresh fish for dinner is definitely on the agenda - we aim to gather fresh seafood along our travels to enjoy shared at camp.

Reef species including grouper, snapper, emperors are regularly caught, bread & butter species are caught from the shore including trevally which put up a great fight. Crabs can be found just offshore and we can forridge for Razorfish & Oysters, your lead guide will show you how to collect these & offer some pointers throughout our journey. Turtle Bay is fantastic for a spear fish for those who enjoy this style of fishing & snorkelling opportunities abound.

You will receive further information on fishing, guidelines & fact sheets through the booking process.

AUGUST ADVENTURES:

August is a fantastic time to visit, with nice weather & favourable conditions usually present. The island is overtaken by wildflowers & thousands of migrating whales, visible across the coastlines traverse along the rugged West Coast. August is an ideal time to join a Tagalong here for an all round adventure that encompasses all aspects of island life.

MARCH / APRIL ADVENTURES:

Late March & early April is a fisherman's paradise, it's hotter & so is the fishing. Ballooning from the cliffs for Mackerel is popular & demersal species are regularly caught. There's still plenty of time to check out & experience this amazing island including discovering amazing secluded beaches, snorkelling, diving & uncovering the history of times long past.

The night before we depart on the barge, you have an included night at Shelter Bay including Edel Land Permit to access these areas in Shark Bay. All guests are able to arrive at their leisure on the day prior to our scheduled barge transfers.

Returning from DHI to Shelter Bay on the mainland usually takes place first thing in the morning on our final day. This is due to the winds & conditions being at their best & safest for transfer. The barge skipper will update us on the island the day before - some flexibility may be required.

Please note if you wish to spend extra time at Steep Point before or after the adventure you will need to arrange with the Steep Point Rangers direct; You will need to cover all these costs involved with your stay on the mainland.

Also included in your trip price:

1 included dinner at DHI lodge | Dirk Hartog Return Barge Transfers | Dirk Hartog National Park Permits,
| Dirk Hartog National | Park Camping Fee's & exclusive use of
Buddy's camp and facilities. | Edel Land Access Permit &
Overnight Camp Fee | Services of a lead guide with
great local knowledge to give your trip here
the wow factor | See the best of the island,
amazing sunsets, t great fishing &
special spots how we do it! | Learn
some of the history of the area
including Pearling & Pastoral
history.+ so much more!



Epic Adventure!





LIFE'S BETTER BY THE BEACH!

Water based activities are popular at DHI & we have great spots to share so you can really experience it in all its glory. Snorkeling, fishing or whale spotting, we've got the top spots covered no matter what time of year you are joining us on the island.

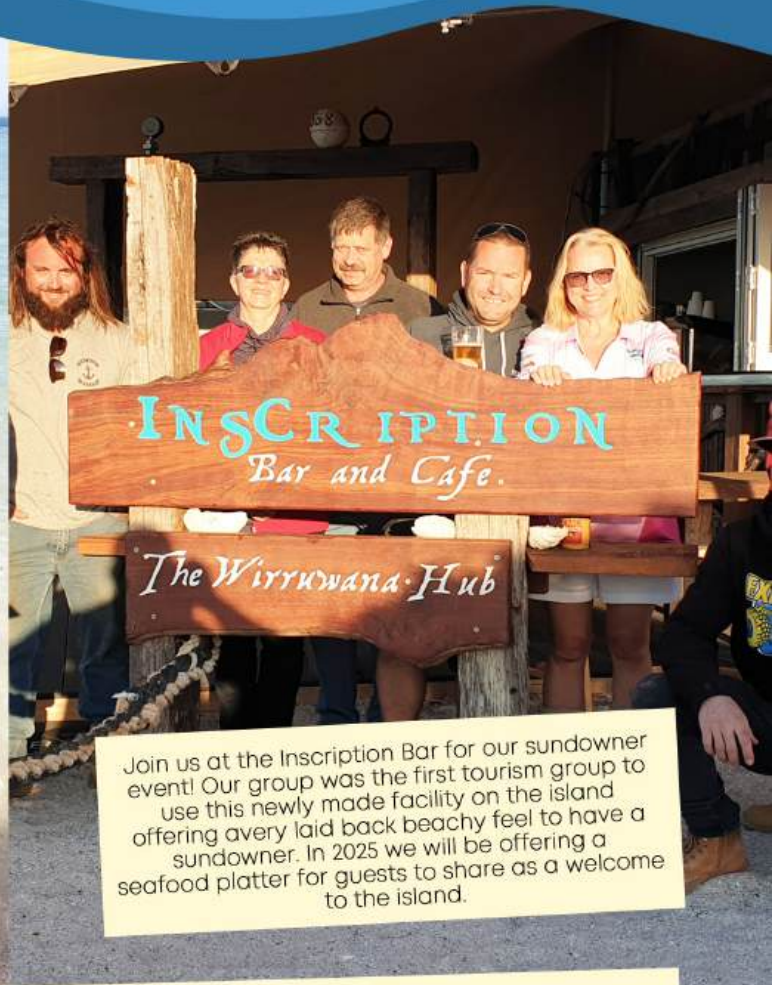


Meet the locals!

SOME OTHER EXPERIENCES YOU WILL ENJOY



Catch a fresh feed of fish, collect some Oysters or grab some tasty Shark Bay Blue Manna Crabs.



Join us at the Inscription Bar for our sundowner event! Our group was the first tourism group to use this newly made facility on the island offering every laid back beachy feel to have a sundowner. In 2025 we will be offering a seafood platter for guests to share as a welcome to the island.

Join us for the last sunset in Australia as we take you to a hidden lookout where you will be the last people in Western Australia to see the sun dip over the ocean.



Optional Weather Event Protection From Dirk Hartog island-Below is direct from Dirk Hartog is.

"Whilst we recommend that you purchase traditional travel insurance to protect against eventualities which may cause you to cancel your booking at short notice, if you have booked a 4WD barge transfer and are camping on the island - for an optional additional fee of \$55 per 4WD, you can purchase Weather Event Protection with Dirk Hartog Island through us. If you pay this additional fee, and the track into Steep Point is closed by DBCA or other relevant authority due to a weather event and/or the island is closed due to a weather event restricting your ability to commence or continue your holiday - we will provide a refund of any unused portion of your booking related to that 4WD transfer and camping fees. We will of course do everything possible to transfer your booking to alternative suitable dates, however if this cannot be done, we will be happy to refund any unused portion of the amount you have paid, less the \$55 fee for the Weather Event Protection.

To qualify for the Optional Weather Event Protection, this cover must be purchased at the time of booking-it cannot be added to your booking at a later date unless by agreement by Dirk Hartog Island."

Please note Explore WA's booking terms & conditions still apply, however this additional protection we recommend for a more streamlined return of funds paid out to third party suppliers in the event of unforeseen weather events closing the island.

"The Island offers an experience so unique it feels a million miles from home" - Jed Currey



YOUR REQUIREMENTS

- Vehicles should be in sound mechanical condition and Spare tyre in VGC condition, minimum A/T's with Light Truck construction required.
- You need to carry all camping equipment, food, beverages and water. Showering/Washing up water can be collected at the homestead camp. Fresh water is provided at Buddys camp to refill personal water bottles only. Bore water operates Toilet & showers at Buddys Camp - Water is precious here on the island.
- Make sure you bring sun protection & vehicle based shelter is a great idea.
- No dogs are permitted.
- Air compressor & tyre deflators.
- Two way radio mandatory to communicate with convoy. Ensure it is working well.
- Camper Trailers or small tinny's should be checked over before travelling on this tagalong to ensure they are fit to travel.
- All fishing equipment, Lures e.t.c
- Clothing for all weather, sun protection, insect repellent e.t.c
- Bring an amount of cash in case of outages - Barista coffees are available every morning & the inscription bar operates. While eftpos is available, cash can be invaluable.

Dirk Hartog Island is an A Class reserve of international significance. A premiere Eco-Tourism destination, you will need to play your part in leaving no trace. Recyclables can be left at the homestead, other wastes must all be taken to the mainland upon departure.

FIREWOOD

Fires are possible at Buddy's Camp in season. If bringing timber, make sure it is packaged Jarrah and held within your vehicle. Biosecurity management is important. Usually it is easier to purchase on the island at our camp.

FUEL

Fuel can be pre arranged on the island for a fee. Prices fluctuate so please enquire closer to departure if you wish to secure some fuel supplies on the island. Most people carry sufficient fuel supplies after topping up at Overlander Road house or Denham but it is very convenient to have additional available on the island should you have a smaller capacity.

From Overlander Roadhouse, its roughly 315km return (Barge Landing & Overlander) on mainly moderate speed gravel,sandy,corrugated road.

You will be covering a variety of terrains on Dirk Hartog Island with speeds under 40km/h.

Distances vary depending on route taken, extra activities. Allowing 300km range on the island plus 315km of travel to fuel will form the base for your fuel requirement.



Island Paradise



WANT TO BOOK? IT'S EASY!

Please get in touch to let us know you would like to book on the adventure & if you have any questions, we will be more than happy to answer for you at this stage. You will be sent a trip invoice along with further info for the booking process. Deposits can be arranged during contact as required.

Limited spots on these adventures to Dirk Hartog Island. Families are welcome on all our trips.

Contact Jed at:
admin@explore-wa.net

or on Phone:
0406108480

Visit us
online on

www.explore-wa.net
[@explorewa4wd](https://www.instagram.com/explorewa4wd)





Take to the sky